

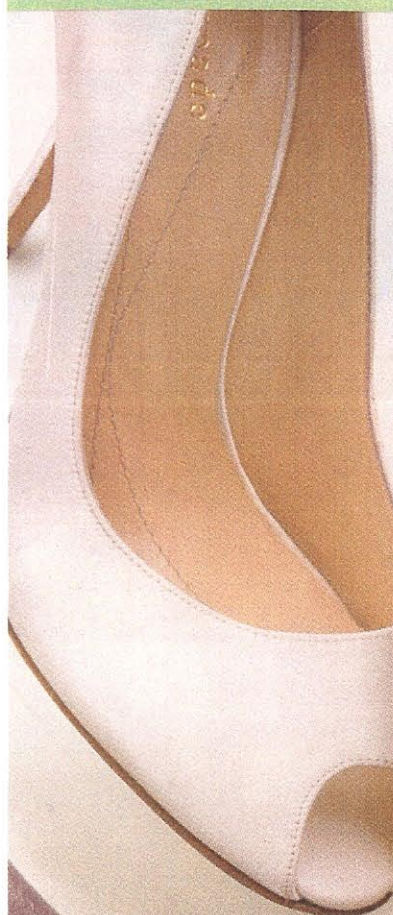
Wedding Shoes

InStyle

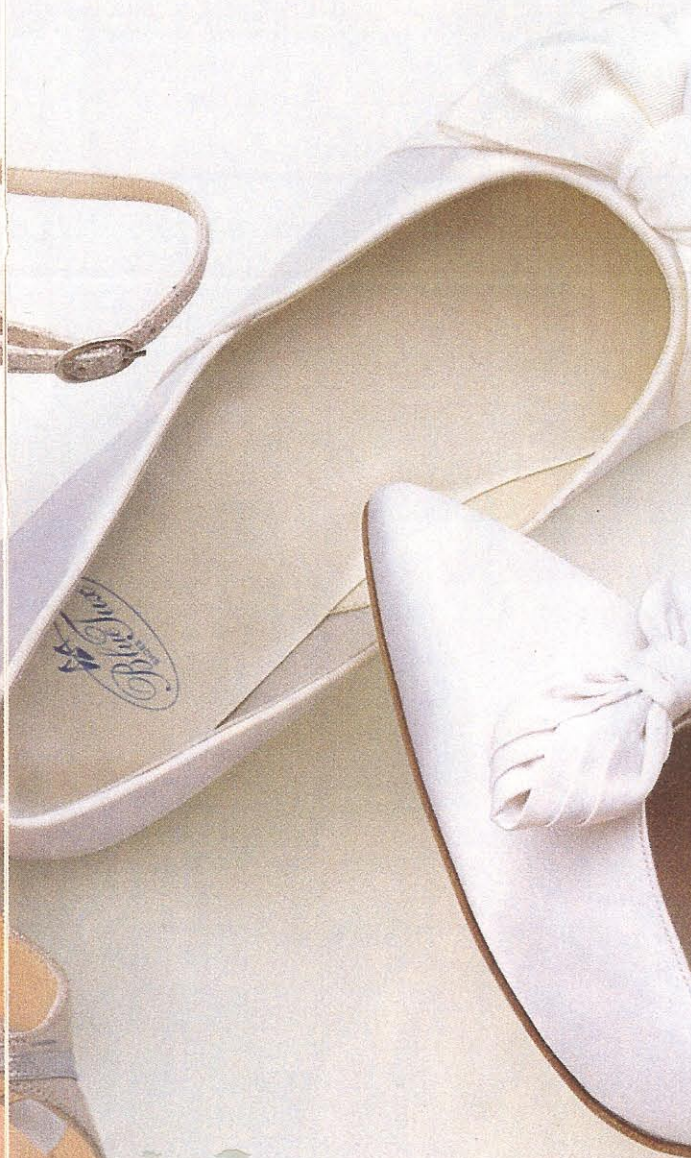


PEEP-TOE PUMPS

Think traditional with a modern twist. Thanks to understated fabric and graceful lines, these will work well with almost any gown. Satin, Kate Spade, \$250; 800-519-3778.

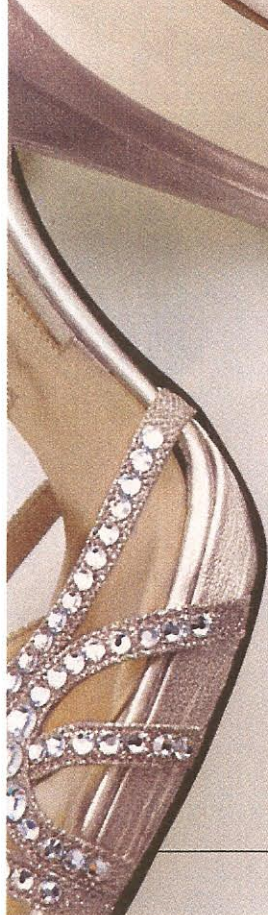


look especially lovely with a full, tea-length dress. White dyeable satin with grosgrain ribbon, Blue Tux Shoes, \$110; 312-563-185



WEDGE HEELS

This fresh, fashionable take on a thirties favorite will appeal to cutting-edge brides. Bonus: It's a bit sturdier than a stiletto. Laminated suede and kid leather, Gwendolyn Carrié, \$425; gwendolyncarrie.com.



CLASSIC PUMPS

They're versatile to a mid-height more could you Satin, Delman, \$